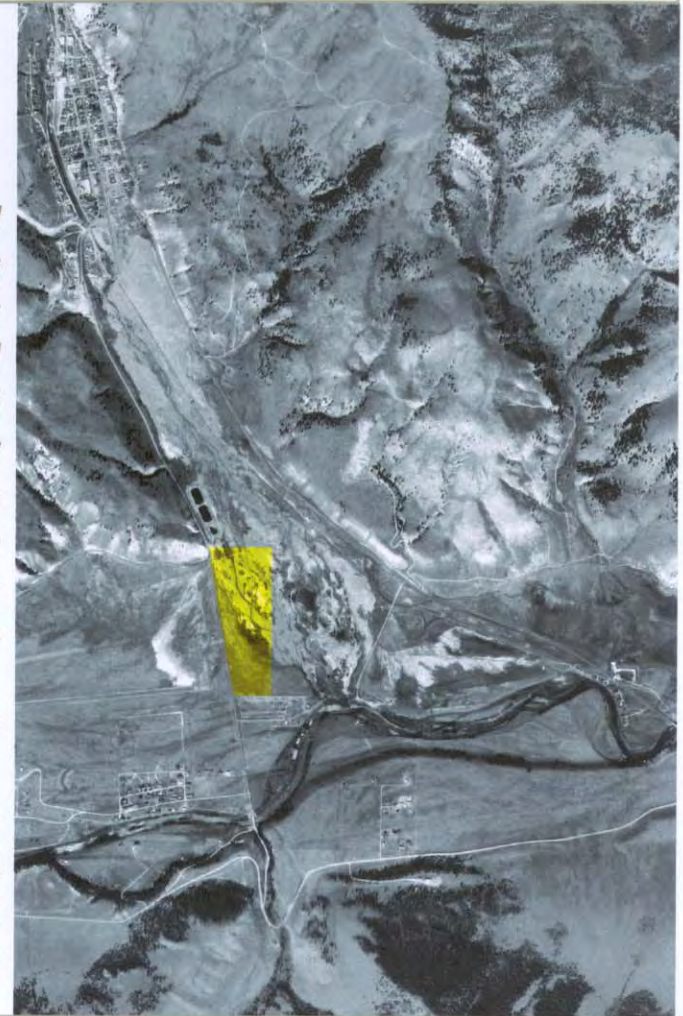


*Illustrated
briefing
document
prepared
for Mineral
County
Fairgrounds
Association
Creede
Colorado*

August 2003

51% studios ltd
architecture & design
1-5 clerkenwell rd
london ec1m 5pa
tel: +44 [0] 20 7251 6963
fax: +44 [0] 20 7251 6964
e-mail: info@51pct.com



*Mineral County
Fairgrounds Association*



51% studios ltd

statement of mission and intent

"It is the mission of the Mineral County Fairgrounds Association (MCFA) to develop and oversee the construction, management, promotion and maintenance of an all-weather, multi-use Fairgrounds: a recreation/sports, events and equestrian center for the Creede/Mineral County community. Further it is the mission of the MCFA to create and promote a broad range of recreational, educational and cultural events and activities of interest and benefit to Creede/Mineral County residents."
By-Laws 2002

In 1997, the Mineral County Fairgrounds Association was formed to begin creating a facility which would offer a wide range of youth and adult activities, as well as educational opportunities to our citizens.

Full-time and part-time jobs will be created to manage the fairgrounds and to organize and promote its events and programs and, as such, the project will significantly contribute to the recreational and economic needs of Creede and Mineral County.

The proposed fairgrounds will be built in several phases with funds from grants and private donations. It will be managed as a not-for-profit corporation and its operating expenses will be paid with revenues from events, ticket sales, facility rental, arena fees, and fund-raisers.

The content of project phases may evolve with the availability of funding and human resources. Priorities will shift with community interest as the project progresses. Specific interest organizations may, in the future, take on the creation of facilities within our site - such as mountain bike courses, climbing walls and a swimming pool. We will control the design and site placement, but not necessarily the activities.

We will be working in partnership with the Willow Creek Reclamation Committee (WCRC), the City, County, schools, community organizations, clubs, and the Chamber of Commerce.

We are stewards of 46 acres (generously gifted by John Parker) and feel culturally, aesthetically, environmentally and fiscally responsible to our community.

We are interested in using native materials in a way that creatively reflects our mining, timbering and frontier history; contemporary and timeless.

We want to employ unique, efficient building systems and materials, such as solar, straw bale, in-floor radiant heat, natural light and to recycle gray water for crop and landscape irrigation.

A condition of this gift is soil remediation as set forth by the Environmental Protection Agency (EPA) and in partnership with the WCRC.

The reclamation process can become a series of educational community projects involving the 4H, FFA, school agricultural and science departments. Reclamation can be achieved through various means: soil removal, burming, covering with parking and buildings, land-filling, phytoremediation and crop development. The middle "bench" has the worst heavy metal contamination (primarily lead and cadmium. The top bench is relatively fertile and uncontaminated [water, fertilizer and crop development will easily restore this to the satisfaction of the EPA].

Exciting architecture, site layout and landscaping will attract participants to events, inspire philanthropists, create lasting memories for visitors and be a source of great community pride. We believe this project will be a focal point for Creede, supporting our sense of community, and will have tremendous economic and cultural development impact on Creede and Mineral County.



considerations: neighbouring views

view from the air / the Snowshoe

view from outdoor arena

clear distinction between cars, trucks and pedestrians

snow engineering for roofs

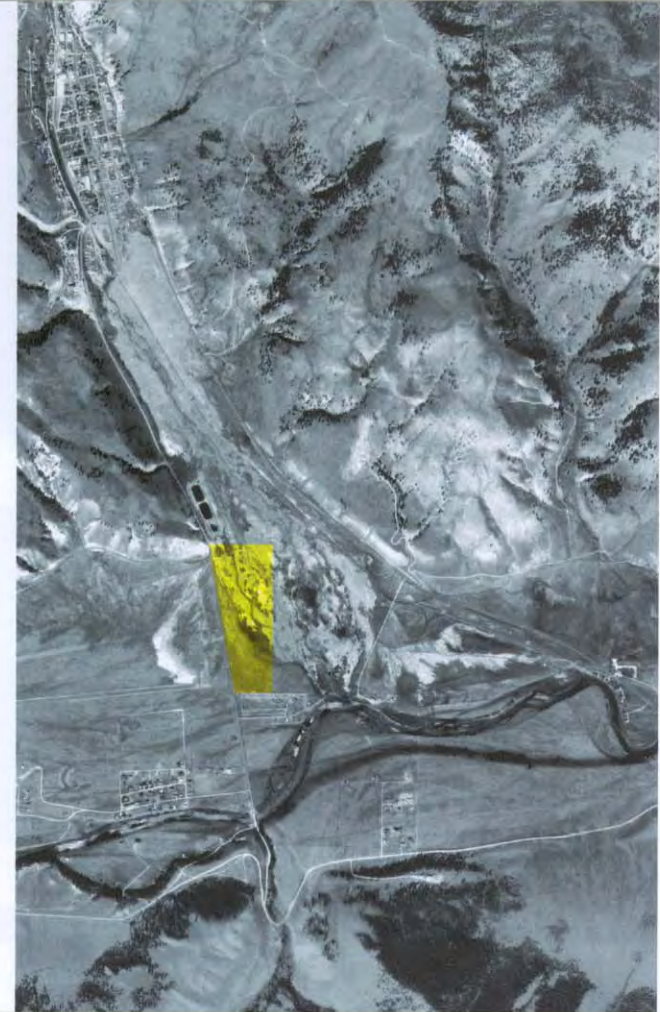
criteria: flexibility - to enable year-round multi-use

strategies: create public foyer spaces and promenades

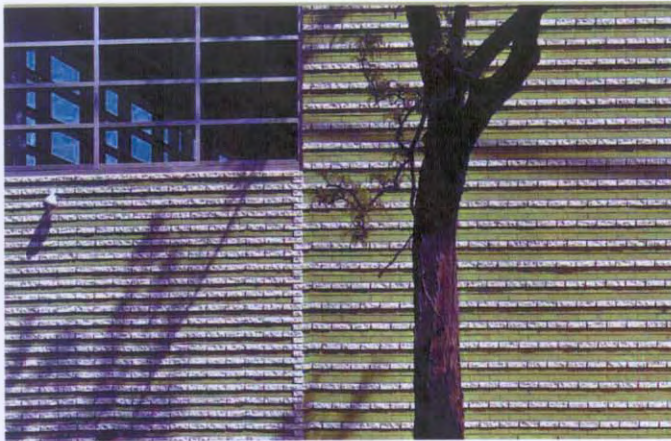
enhance qualities of light, especially daylighting, for all spaces

use remediation to create an enduring 'functional landscape' for fairgrounds and willow creek parklands

use bleachers to create tertiary enclosures



precedent images



exciting textures on simple industrial framed building
stone and brick clad gymnasium



roof as landscape - good for insulation and acoustics
library, delft, mecano architects



clerestory lighting acts as lantern at night
herzog and de meuron



flexible space & light w/ standardized industrial materials
house in france, lacatan and vassal



semi-shaded public 'foyer'
los angeles design centre



framed views through gabion wall
dominus winery, napa valley, herzog and de meuron

Mineral County
Fairgrounds Association



51% studios ltd

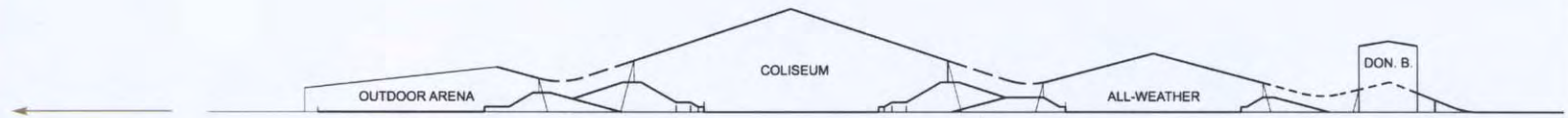
built-in flexibility: to enable an all-weather, multi-use fairgrounds

Equal importance is given to pedestrians, the animals and their trucks.

By extending the eaves of a standardised industrial building, a generosity is extended to the public spaces around the buildings.

'Internal streets' can house vendors, semi open air projections onto flank walls and indoor/outdoor eating.

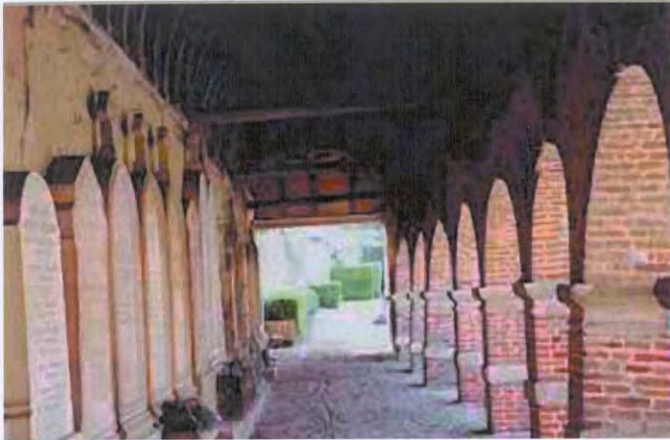
The space under the bleachers [when arranged back to back] is designed to be able to house different programmes and is at the heart of both the schemes.



Mineral County
Fairgrounds Association



51% studios Ltd



arcaded space affords protection and openness
montfort l'amaury, france



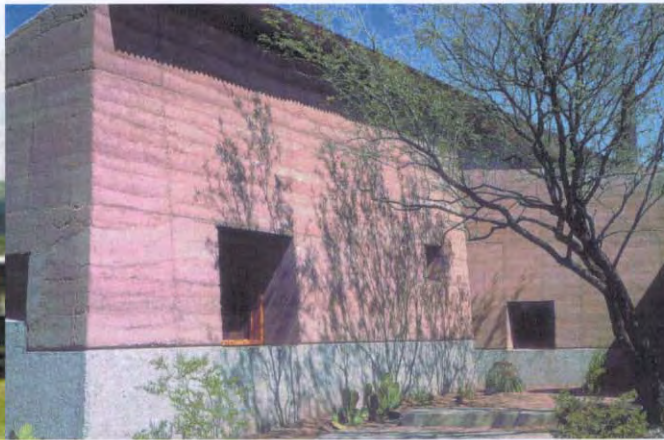
sculpture in parkland
christo



kenwood concert shell and thousand pound lake
london



grass mound - considered first contemporary earthwork
aspen art institute, colorado, herbert bayer



rammed earth walls
rick joy

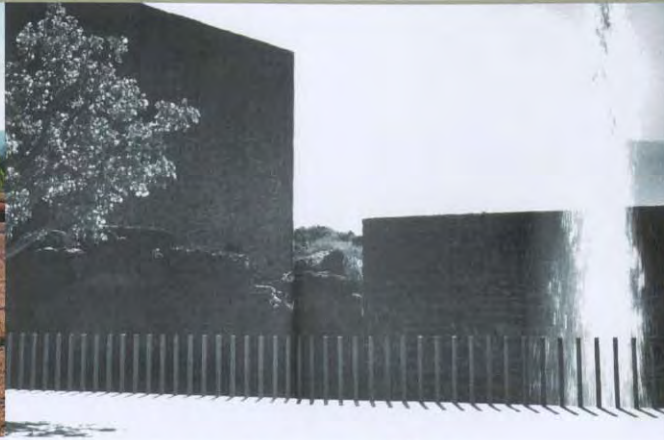


using gabions for remediation of river bed

precedent images



fenced paddocks and pastures
hakahana ranch, highveld, helmut and toska stauch



gum pole edge to public terrace
louis barragan



rodeo



interior of donated building - could we use the height?
creede



interior of former turbine hall - now grand entrance
tate modern, london, herzog and de meuron



watering trough for pastures
hakahana ranch, highveld, helmut and toska stauch

Mineral County
Fairgrounds Association



51% studios ltd

precedent images



cloud circle landscape sculpture
richard long, england



farming as art



landscape sculpture



the lightning fields
southern new mexico, walter de la marie



roping



phytoremediation of wetlands
usa

Mineral County
Fairgrounds Association



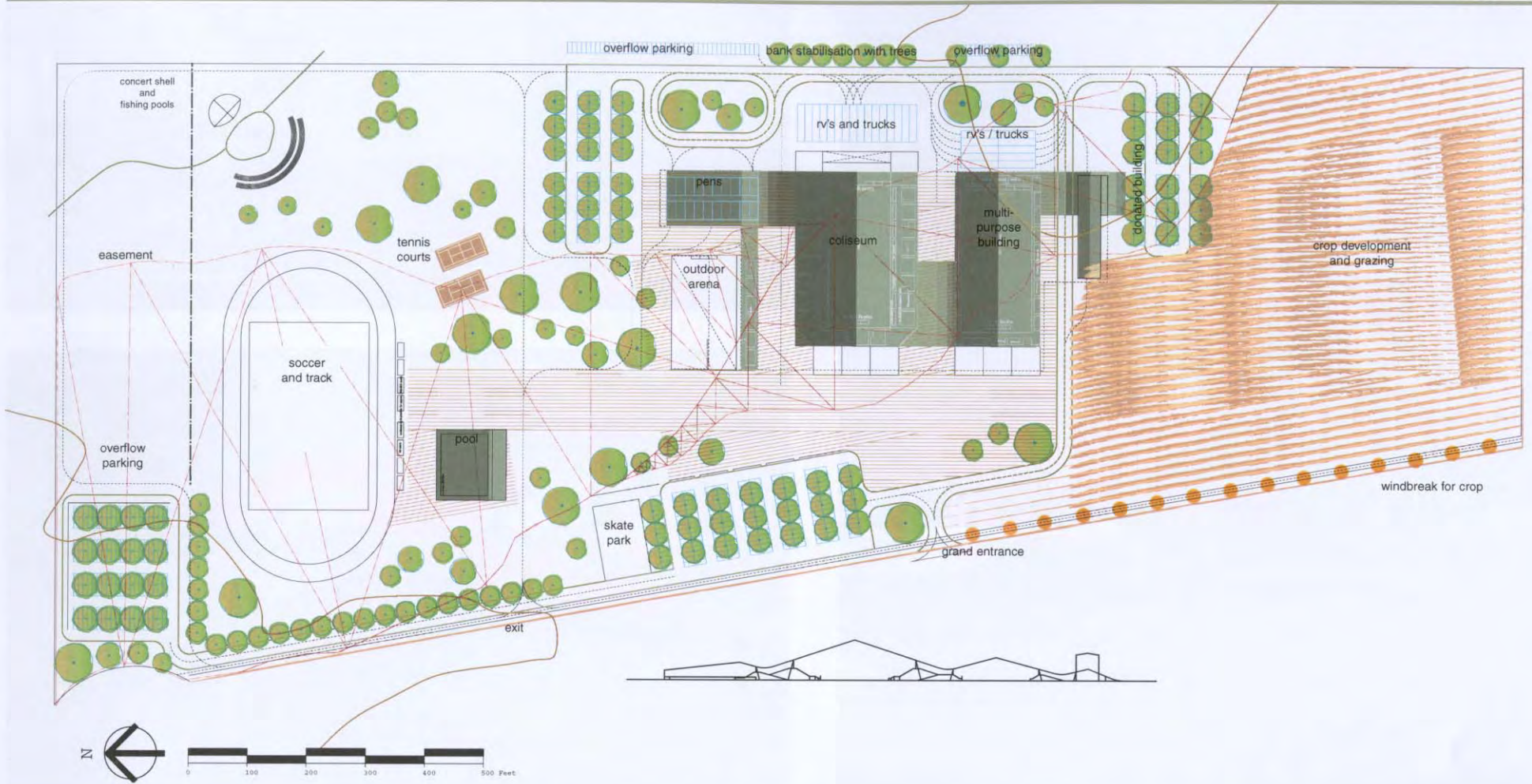
51% studios Ltd

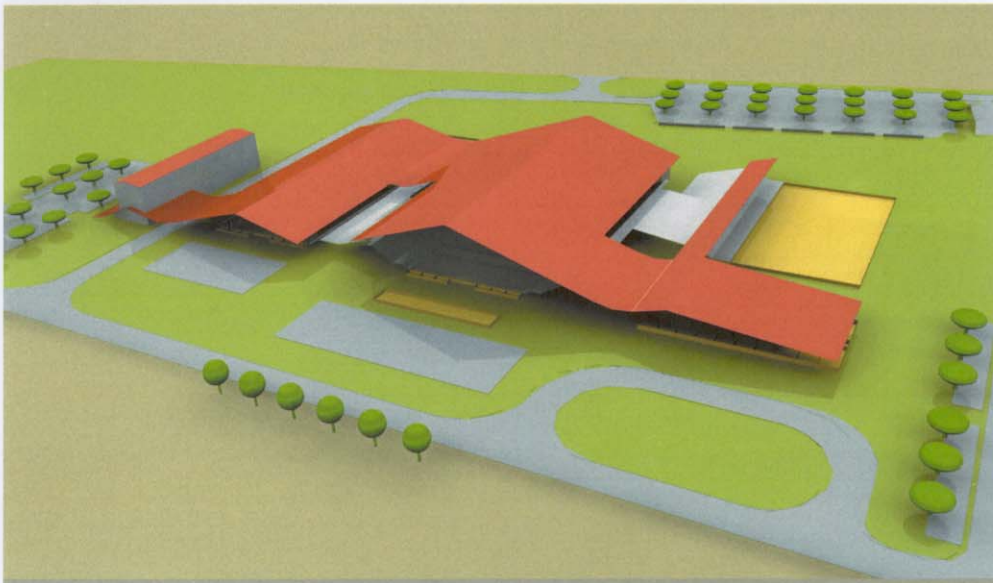
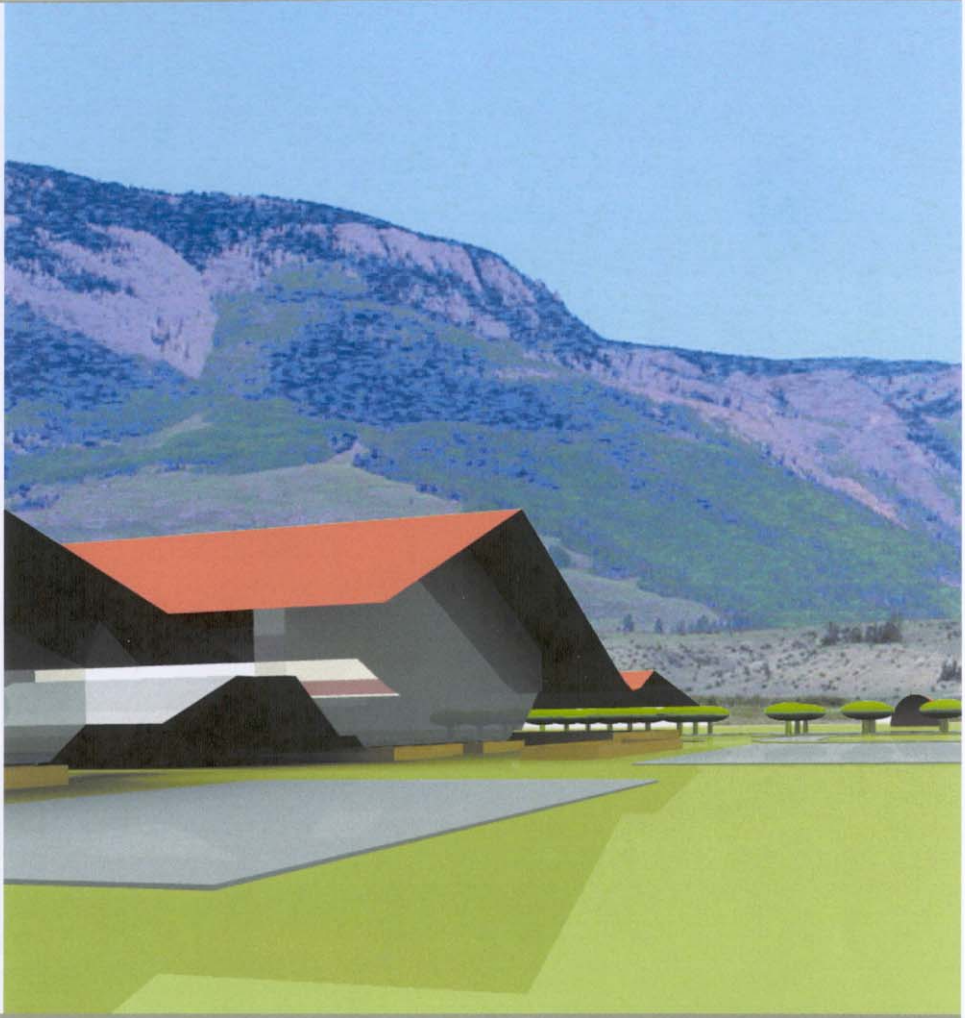


*Mineral County
Fairgrounds Association*



51% studios Ltd





*Mineral County
Fairgrounds Association*



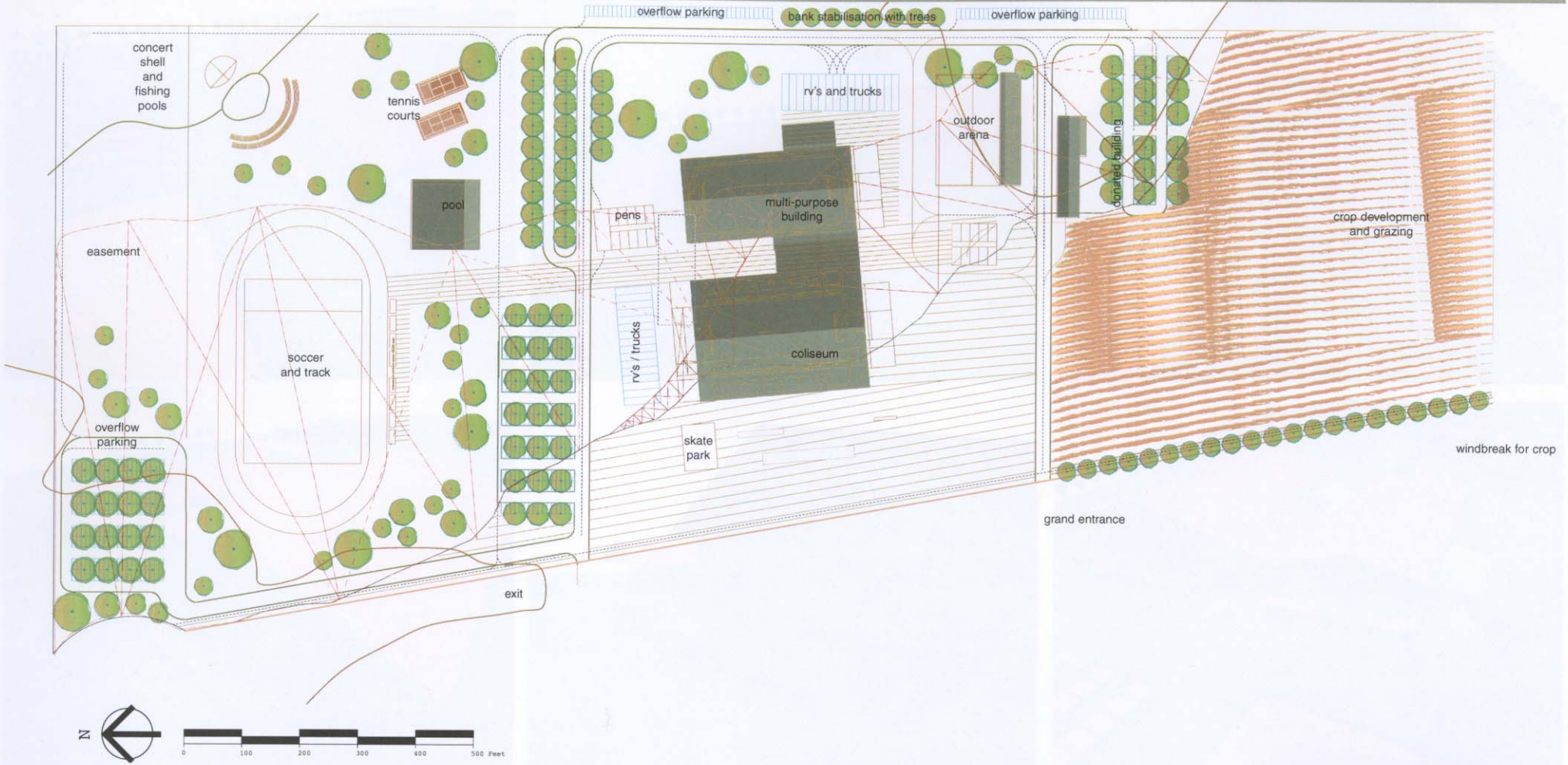
51% studios Ltd



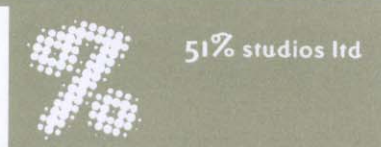
*Mineral County
Fairgrounds Association*

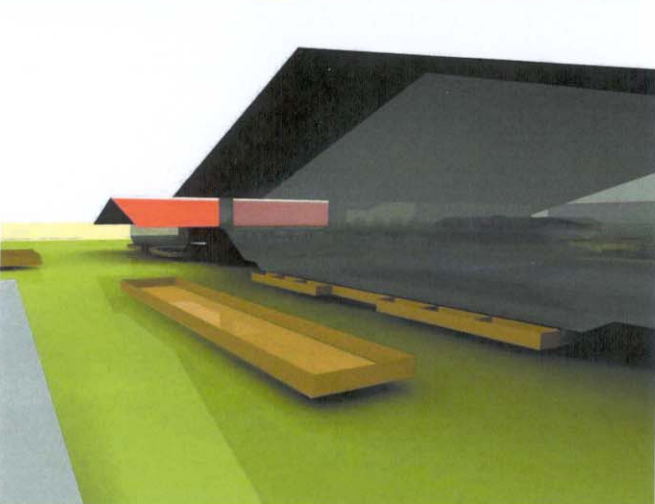
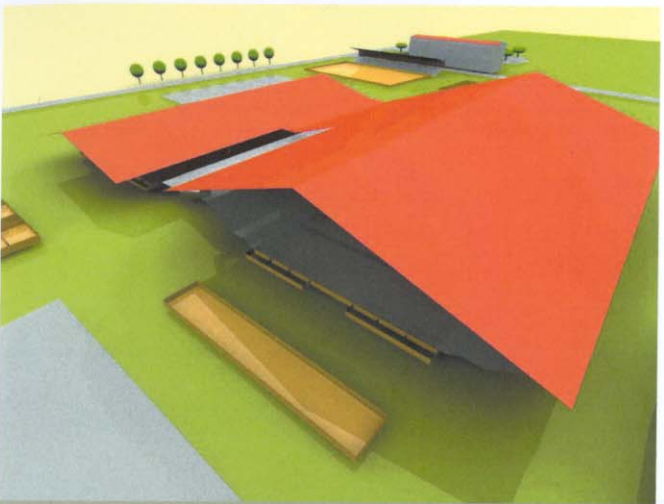
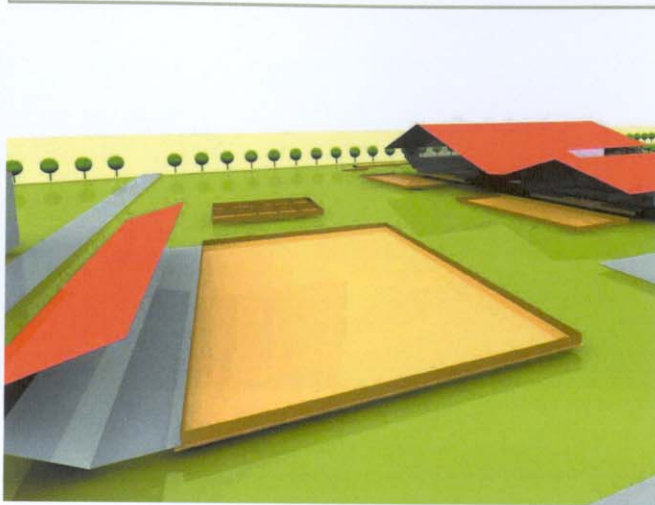
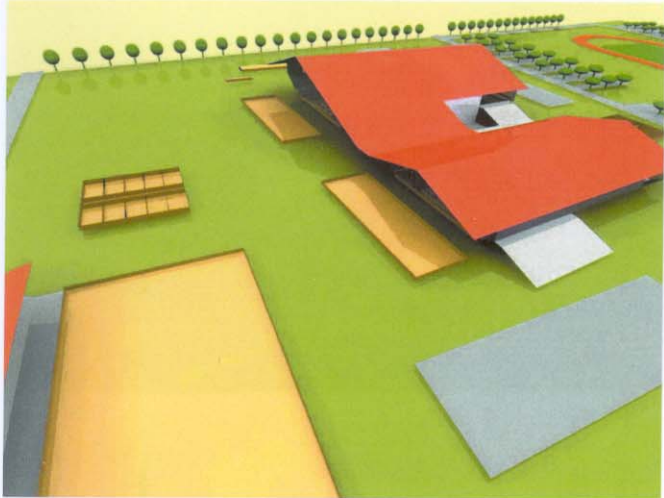


51% studios Ltd



Mineral County
Fairgrounds Association





*Mineral County
Fairgrounds Association*



51% studios Ltd

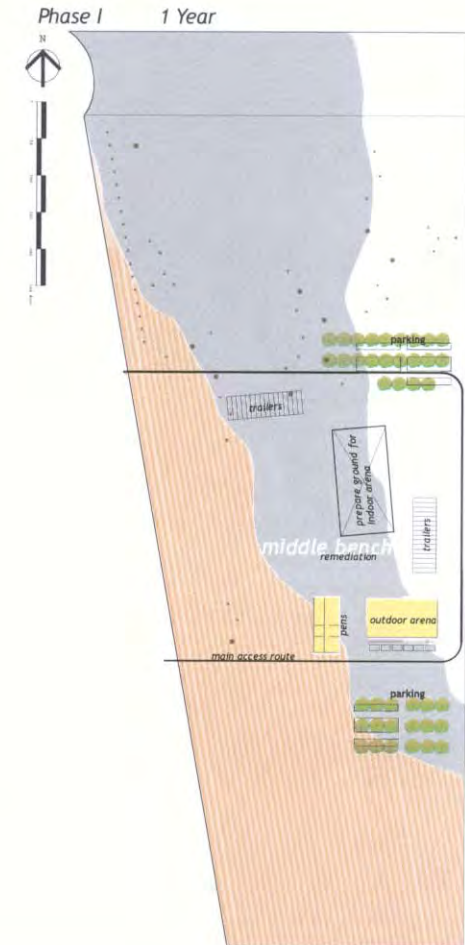


Mineral County
Fairgrounds Association



51% studios Ltd

- Outdoor arena: 100' x 150' w/ cattle chutes
- Spectator bleachers: 500 spectators w/ sun / rain shelter
- Outdoor livestock pens: 20 pens at 16' x 32' each
w/ shed roofs
feed bunks on ends
set up with portable metal panels
- Parking for 200: spectators
contestants
- Parking for 30: trailers (livestock) and RV's (limited)
- Remediation: north end of middle bench
prepare ground, for indoor arena
- Water: buy commercial and agricultural rights
- Sewage treatment: tie-in to city, build own or hook up with John Parker
- Underground electrical utilities: 3 phase power is in place



Phase II

1 - 3 Years

All-weather multi-use : outside walls tall enough to add wings later for concessions areas in floor radiant heating for spectators

Building and Arena :

within building: 800+ seats
restrooms, also accessible from outside
coin operated showers, also accessible from outside
kitchen, food preparation, serving and eating
4H club rooms and facilities
county extension office
administration offices
game room / recreation room
dance room for recreation department
vet / emt area

within arena: roping and bucking chutes
announcer, observers, film / light booth
50' x 50' warm-up pre-show area
enter / exit both ends
good multi-purpose sand footing (for horses, livestock, soccer)
sprinkler system for fire and dust

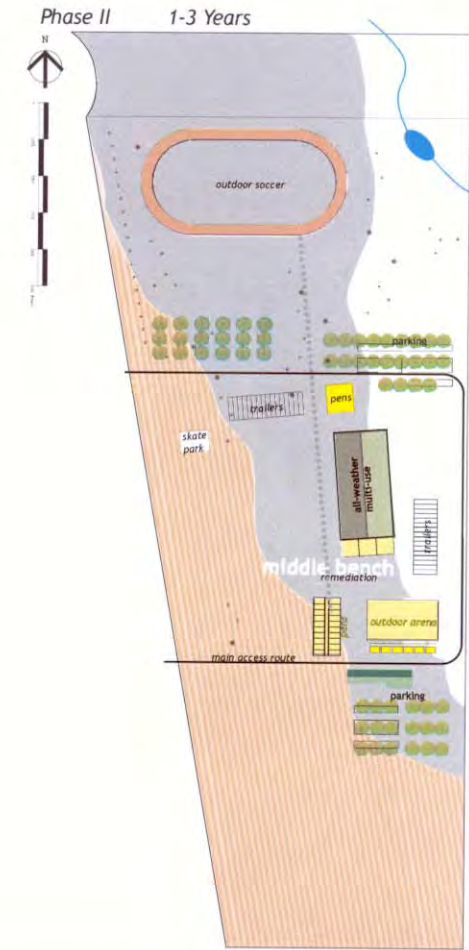
Donated Building : to be reconstructed at the MCF
40' x 180' x 45' high, w/ lean-to: 12' wide x 70' long

within building: indoor stalls and stables
tractor w/ plow, manure/compost spreader, loader and forks
feed, hay, bedding storage
small animal facilities for 4H and County Fair

outside building: outside wash rack for horses
composting system for manure and bedding

Grand Entrance: roughly opposite airport entrance

Property perimeter fencing and paddock fencing:



Parking for 400: (additional)
spectators
contestants

Hiking / Biking paths: tie-in w/ existing path between town and sewer lagoons
connect to Child Care Centre
connect straight along west side of property to RV Park
link the MCF to Willow Creek Parkland

Hay crop and irrigation system development:

Equestrian paths:

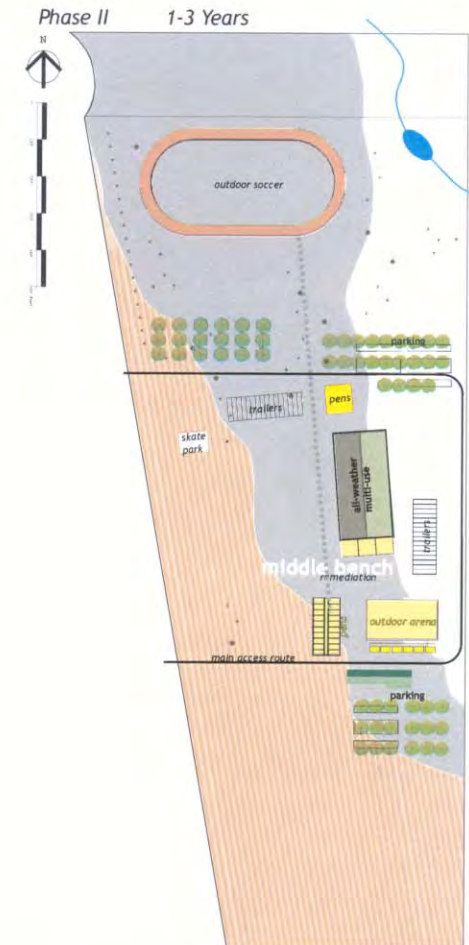
Outdoor soccer:

Track:

Game fields:

Continue remediation of contaminated soil:

Begin landscaping:



Add Wing Pavilions Arena Building for: an additional 500 spectators (1300 spectators total)
 concession area for food
 other retail vendors
 education
 exhibition

Parking for 200: (additional = 600 spaces total)
 spectators
 contestants

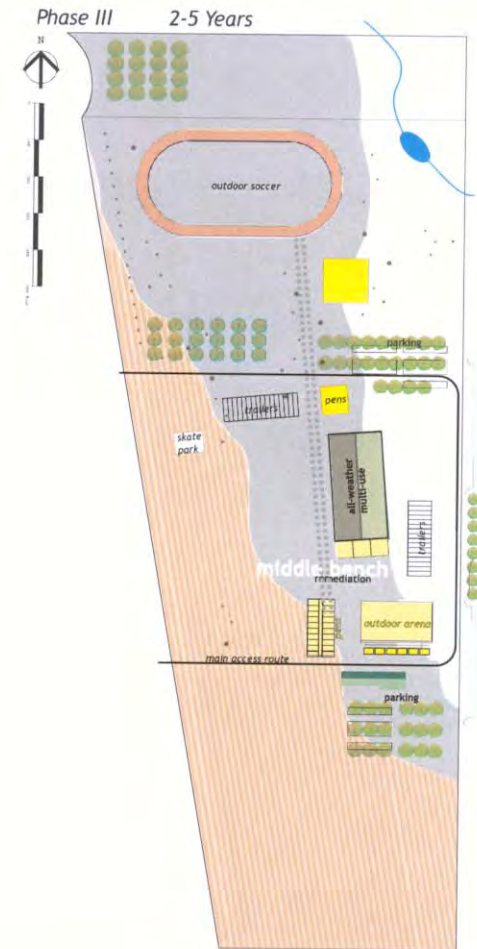
Parking for 20: (additional - 50 spaces total)
 trailers (livestock) and RV's (limited)

Finalize Remediation:

Finalize Landscaping:

Concert Stages: within Arena Building

To be accommodated on site, but not funded by the MCFA: outdoor skating / rollerblading
 indoor / outdoor skateboarding
 dance hall
 climbing wall indoor / outdoor
 swimming pool



Coliseum: to seat 2000+ - arena size: 120' x 250'
roping chutes w/ outdoor warm up area
bucking chutes w/ covered area for bulls

Additional Parking: spectators
contestants

Golf driving range:

Archery / Shooting ranges indoor / outdoor:

Tennis courts:

Mountain bike trail w/ obstacle course:

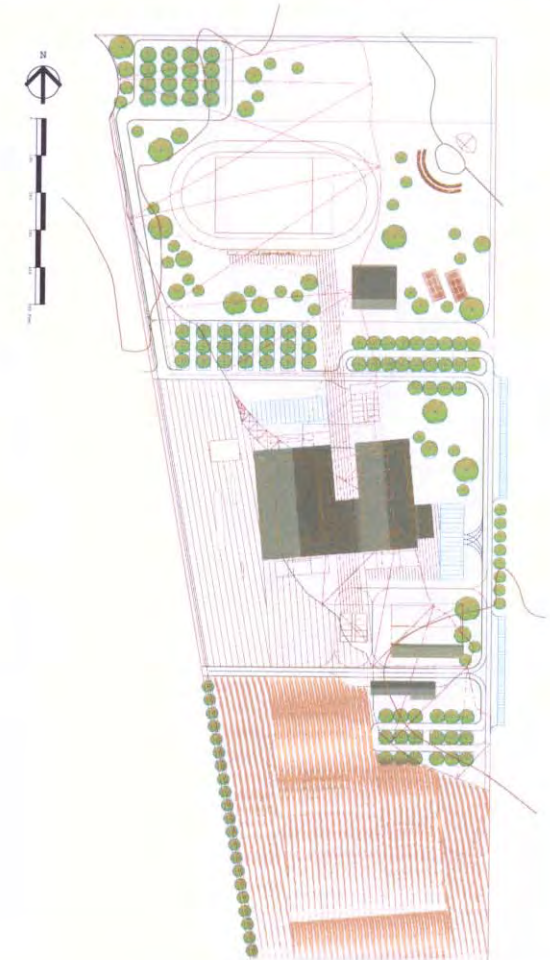
Outdoor concert shell:

Sculpture parkway throughout Willow Creek and Fairgrounds:

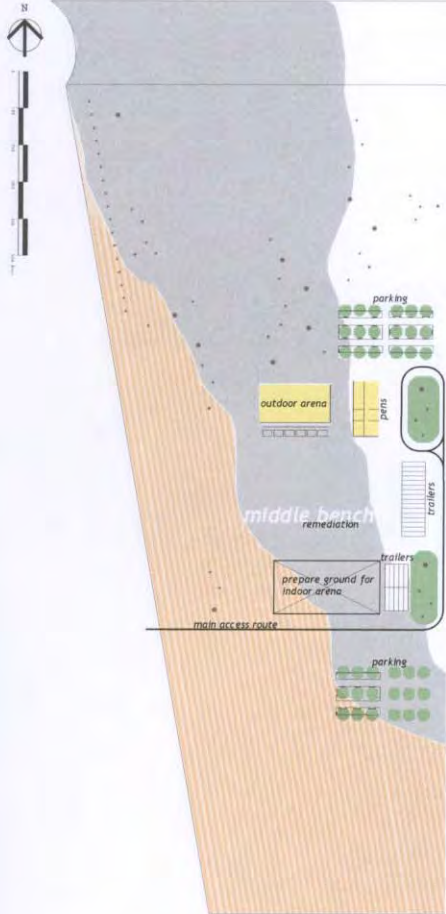
9 hole golf course (sand course) mostly in Willow Creek Project:

Fishing ponds:

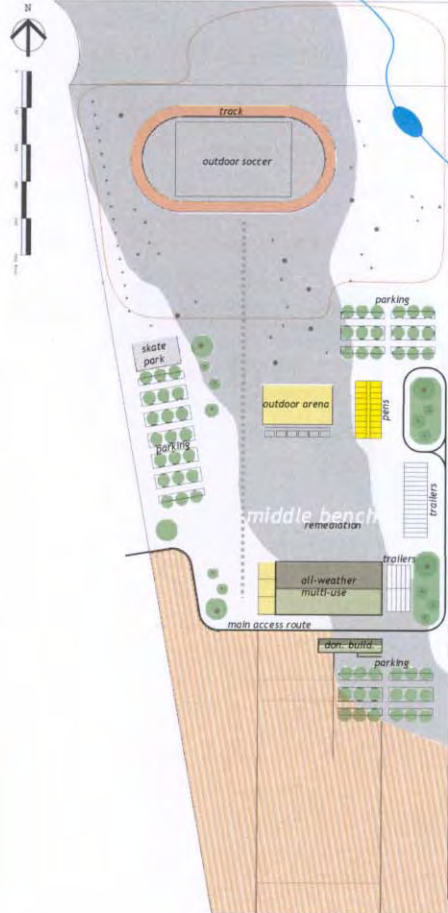
Development of wildlife habitat in conjunction with the WCRC:



Phase I 1 Year

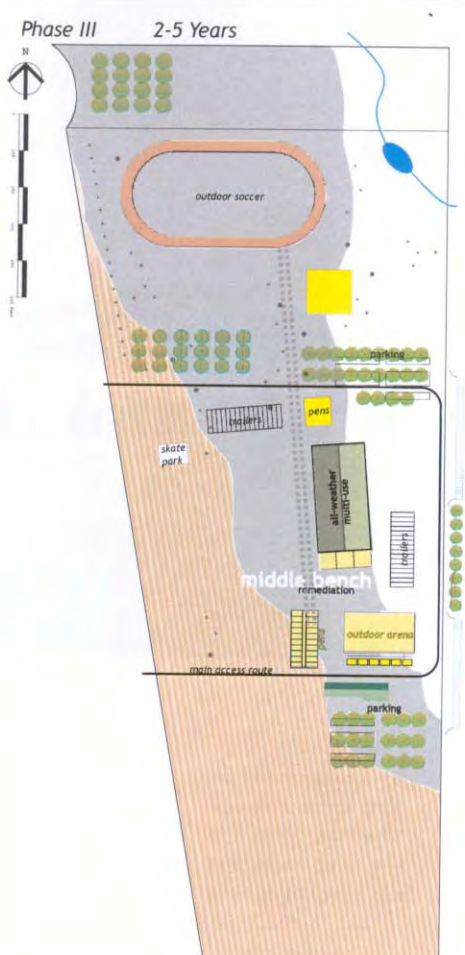
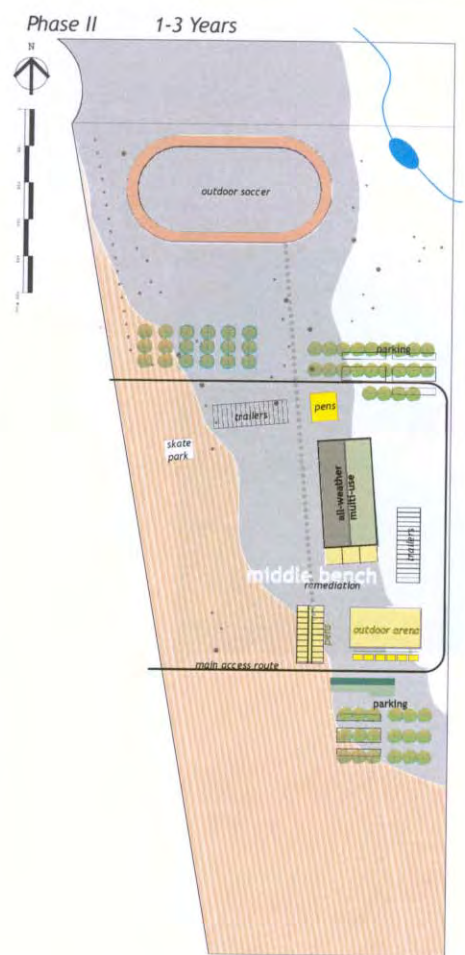
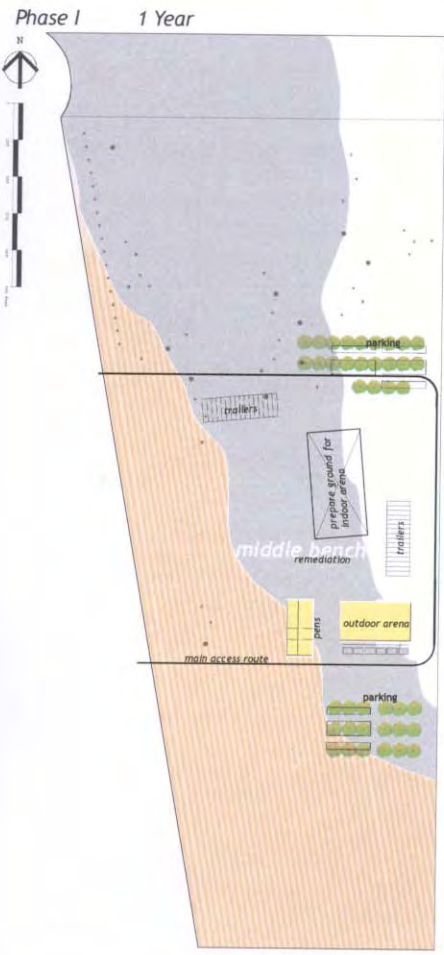


Phase II 1-3 Years



Phase III 2-5 Years







51% studios ltd
1-5 clerkenwell rd
london ec1m 5pa
tel: 0207 251 6963
fax: 0207 251 6964
e: info@51pct.com



51% studios ltd